

Make sure you...

- **Do not** send the application directly to the Scholarship Fund.
- **Send the completed application to your Local Union, System Federation or National Division.**
- **Do not** send any I.R.S. statements or W-2 forms. The Scholarship Fund will not accept these documents.
- **Do not** send a picture.

QUESTIONS AND CORRESPONDENCE

Due to the large number of applicants for this program, applicants are encouraged to get help from their high school counselors to complete all the requirements.

If an applicant needs additional assistance, please contact the Scholarship Fund at this address:

JAMES R. HOFFA MEMORIAL SCHOLARSHIP FUND
25 Louisiana Avenue, NW
Washington, DC 20001
Phone: (202) 624-8735
E-Mail: scholarship@teamster.org

REGULATIONS GOVERNING USE OF SCHOLARSHIPS

Recipients must attend a U.S. college accredited by one of the six Regional Accrediting Commissions of Higher Education associated with the American Council on Education or a Canadian school which has membership in the Association of Universities and Colleges in Canada.

Furthermore, recipients must attend an accredited institution that charges tuition. A recipient may not utilize this scholarship while attending a tuition-free institution such as a military academy.

If the recipient is unable to attend college due to an illness certified by a physician, the scholarship will be held in abeyance for not more than one year. If schooling is interrupted by military service, scholarships will be held in abeyance for not more than two years, unless the military service is of such a nature as to warrant special consideration beyond that time. When returning from military service, the scholarship recipient must notify the Scholarship Fund and apply for readmission within 90 days and return to school within six months thereafter.

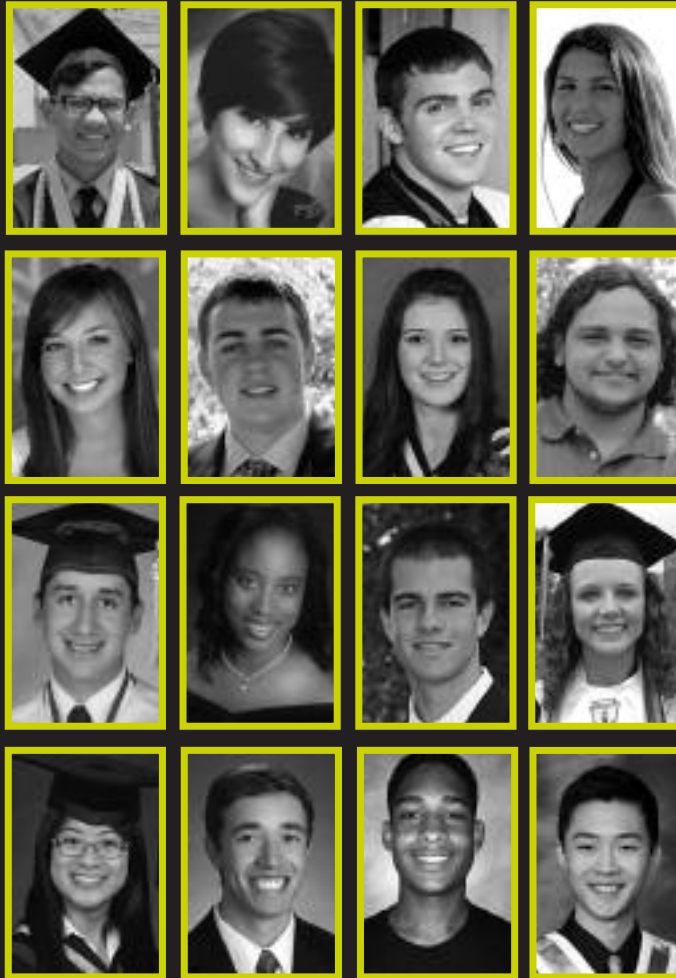
Scholarships will be renewed on an annual basis. The recipient must maintain an academic average consistent with the scholarship requirements of the institution attended. The recipients must maintain a B average (3.00 on a 4.00 scale).

Each year an inquiry will be made of the Teamster Member Relation's status with their local union. **Suspension from Teamster membership for non-payment of dues or for any other reason will result in forfeiture of the scholarship.**

The scholarship fund was established as a non-profit, stand alone, charitable incorporated organization (501(c)3 identification #52-2206826) which will raise significant money from affiliates and outside sources to award Teamster dependents greater scholarship opportunities than have been possible in the past. Although children represent less than 25 percent of the population in our countries, they are 100 percent of our future!



JAMES R. HOFFA became a Teamster member in 1934 and served as General President for 14 years, and, in recognition of his tireless service to the Union and its members, was honored as General President Emeritus for life. At the November 1999 General Executive Board meeting, General Secretary-Treasurer C. Thomas Keegel presented a resolution to establish the new scholarship fund.



*More winners at www.teamster.org

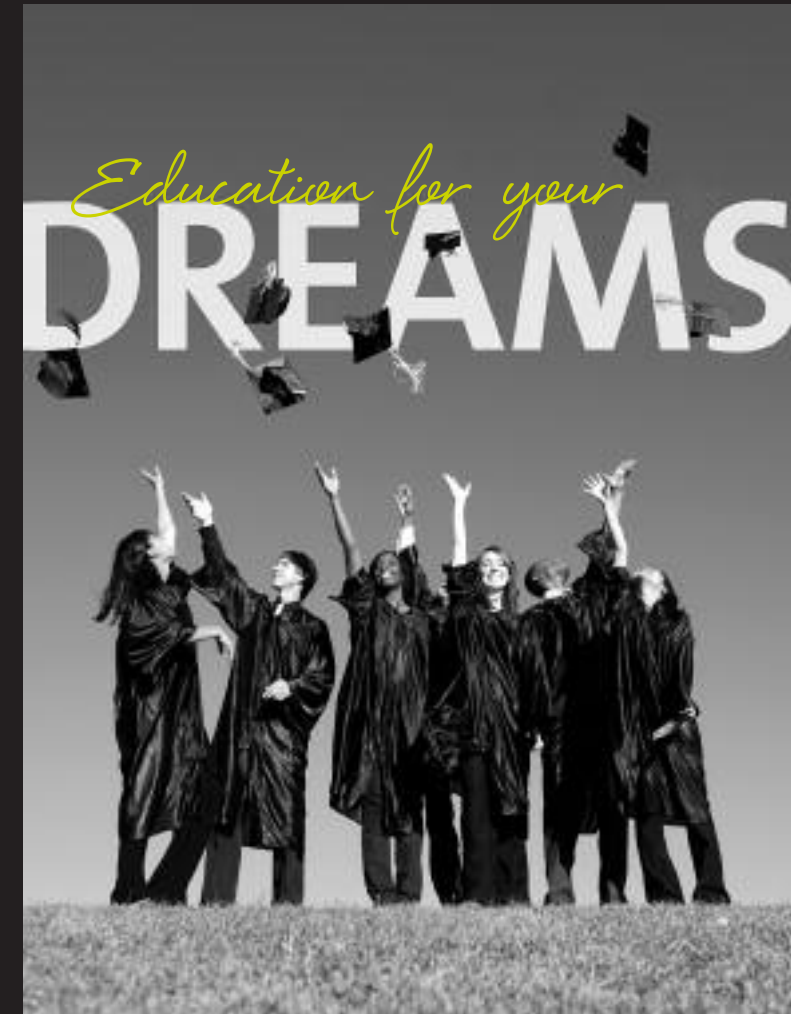


The James R. Hoffa Memorial Scholarship Fund
25 Louisiana Ave., NW
Washington, D.C. 20001
Phone: (202) 624-8735
E-mail: scholarship@teamster.org
Web: www.teamster.org

THE JAMES R. HOFFA MEMORIAL SCHOLARSHIP FUND 2014-2015

ACADEMIC YEAR SCHOLARSHIPS

For High School Seniors who are Children
or Dependents of Teamster Members



For more information, contact your
local Teamsters union office or visit
www.teamster.org



**THE JAMES R. HOFFA
MEMORIAL SCHOLARSHIP FUND
2014-2015 SCHOLARSHIP GUIDE**

INTRODUCTION

This brochure describes the James R. Hoffa Memorial Scholarship Fund and outlines in detail eligibility requirements and application procedures.

Scholarship applicants compete in one of the five geographic regions where the Teamster Member Relation's Teamsters Union affiliate is located.

One category of awards totals \$10,000 each. These four-year scholarships are disbursed at the rate of \$2,500 per year and are renewable annually. Other awards are one-time \$1,000 grants. These scholarships are disbursed to the college or university at the beginning of the recipient's freshman year.

Eligibility requirements and application procedures are the same for all awards. Recipients are selected by an impartial committee of university admissions and financial aid directors based on academic achievement, SAT/ACT scores, character, potential and financial need. We consider all applicants without regard to race, religion, gender, disability, or any other legally protected status.

GUIDELINES

The Scholarship Fund has established some guidelines to be used by students when deciding whether or not to apply to this program. Applicants should:

1. Rank in the top 15 percent of their high school class;
2. Have, or expect to have, excellent SAT or ACT scores; and
3. Demonstrate financial need.

Due to the highly competitive nature of the program and the large number of applicants, students should carefully consider these criteria before submitting an application.

ELIGIBILITY REQUIREMENTS

Students

1. Applicants to the current program must graduate from high school during the 2013-2014 academic year. Students participating in a concurrent enrollment program, where they are attending college courses prior to completion of their high school requirements, must apply the year before they begin full-time college course work. Canadian students may apply during junior or senior matriculation year, but not both.
2. The applicant must be a son, daughter or financially dependent grandchild of a Teamster member. Financially dependent grandchildren and other financial dependents (i.e., stepchildren and wards) of Teamster members are eligible if the member contributes in excess of 50% of the applicant's financial support and if the applicant is a financial dependent of the member for federal income tax purposes.

Teamster Member Relation

1. In the application, the Teamster member whose child, financially dependent grandchild or other qualifying financial dependent is applying for the scholarship is referred to in the application form as "Teamster Member Relation."
2. The applicant's Teamster Member Relation must have been a member in "continuous good standing" as defined in Article II, Section 4 of the International Constitution on the application deadline of March 31, 2014. In addition, the Teamster Member Relation must not have been a full-time elected officer or full-time employee of the International or Teamster affiliate during this period.
3. If the applicant's Teamster Member Relation is retired, he or she must have been a member in continuous good standing for 5 years prior to his or her retirement. In addition, the retired Teamster Member Relation must not have been a full-time elected officer or full-time employee of the International or Teamster affiliate during this period.

APPLICATION PROCEDURE

Applications are available from all Teamster Local Unions and from the Scholarship Fund. In addition, applications can be downloaded from the Teamster website (www.teamster.org). **Applicants should complete the application and forward it to the Teamster parent/grandparent's Local Union, System Federation or National Division.** The Secretary-Treasurer will complete a section of the application and forward it to the Scholarship Fund. **The application must be submitted to the Scholarship Fund by March 31, 2014, as evidenced by postmark..** Any applications that have not been sent from a local union office will be returned to the applicant.

APPLICATION REQUIREMENTS

1. **The Academic Record:** This section is completed by the applicant's guidance counselor. Please attach an **official** copy of the student's high school transcript bearing the official school seal. **It must also contain the student's rank in his or her high school class. If the rank in class or decile percentage cannot be provided, then the student is required to submit the scores of the SAT II Tests.** Home schooled students must submit SAT II Test scores. Two of the SAT II Tests are to consist of English Composition and Mathematics Level I or II. The third SAT II Test must be in either history or science.
2. **ACT or SAT Scores:** The applicant must submit the results from at least one of these two tests. In deciding which test to take, the applicant should consult the school he or she plans to attend. **The ACT or SAT Scores must be attached or included in the high school transcript.**

Letters of Recommendation: Canadian and Puerto Rican applicants must submit 3 Letters of Recommendation (2 academic and 1 personal) instead of SAT or ACT results.